

TREASURE ISLAND AND YERBA BUENA ISLAND



**ARTS MASTER PLAN PHASE 1
ARTIST WORKSHOP
9/11/2017**



ANGEL
ISLAND

TREASURE ISLAND

YERBA BUENA
ISLAND

SAN FRANCISCO

San Francisco, CA

OAKLAND

THE PAST

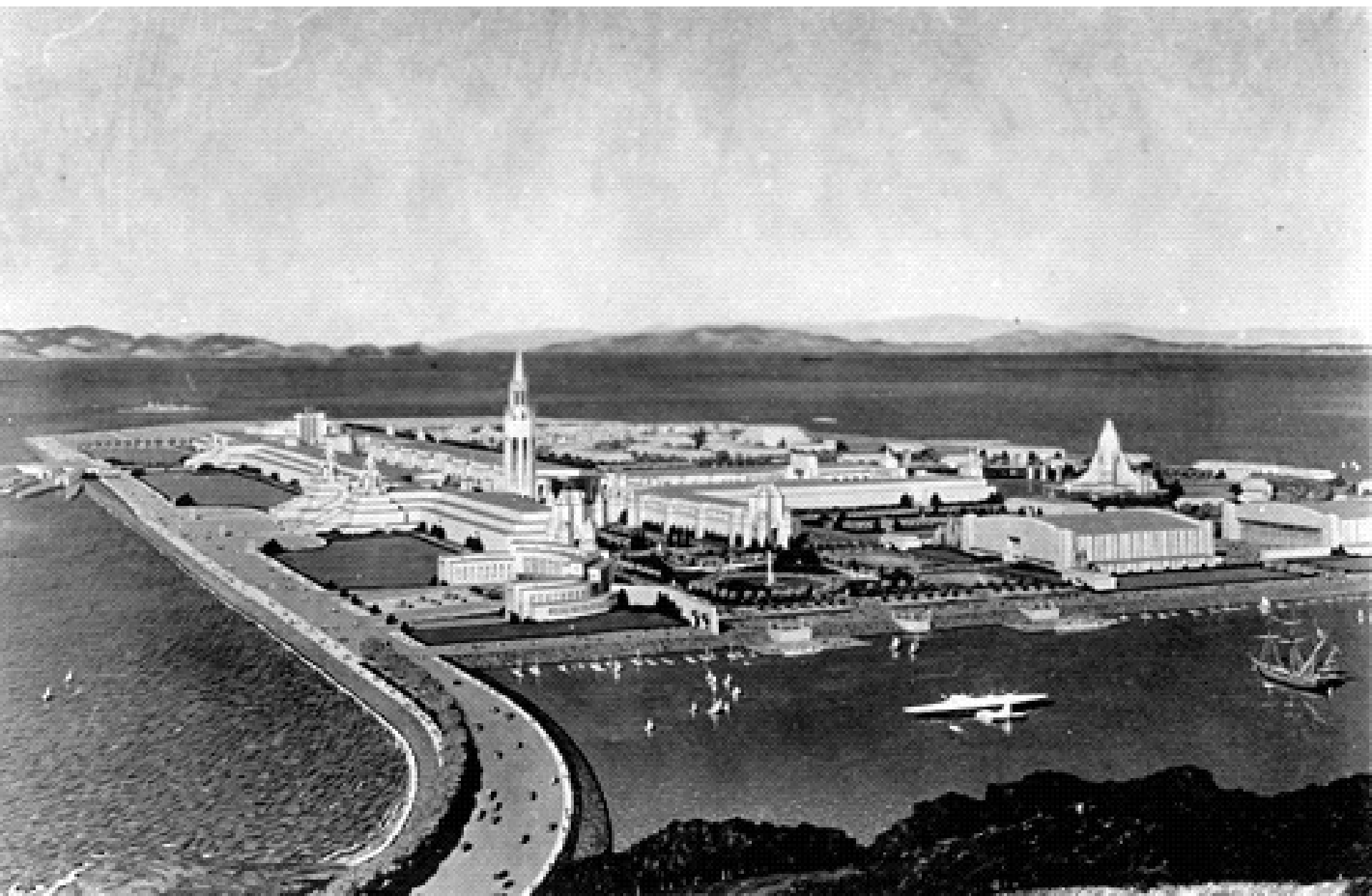


THE PAST



(032-32E-88)(4-2-37-9:35A)(12-2000) YERBA BUENA SHOAL FILL

THE PAST



THE PAST



EXISTING CONDITIONS



THE FUTURE



PROJECT CORNERSTONES

LEADERSHIP IN **SUSTAINABILITY**

ESTABLISHING A **REGIONAL DESTINATION**

A UNIQUE SAN FRANCISCO **NEIGHBORHOOD**

CREATING **COMMUNITY BENEFITS**

MASTER PLAN

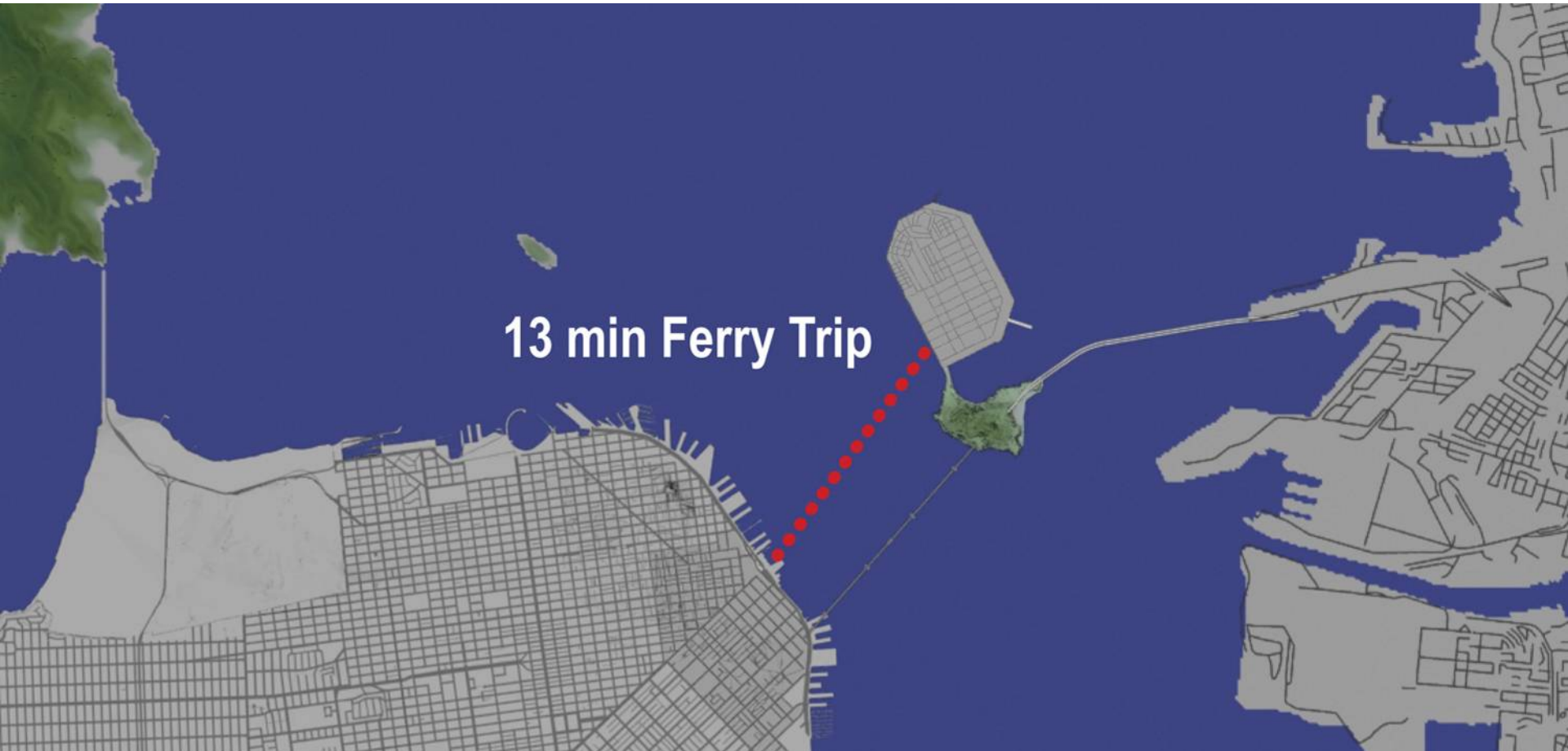
- **8,000 homes on TI and YBI**
- **420 Hotel Rooms**
- **235,000 sf Retail**
- **300 acres Open Space**
- **Historic Adaptive Re-use**

COMPACT DEVELOPMENT

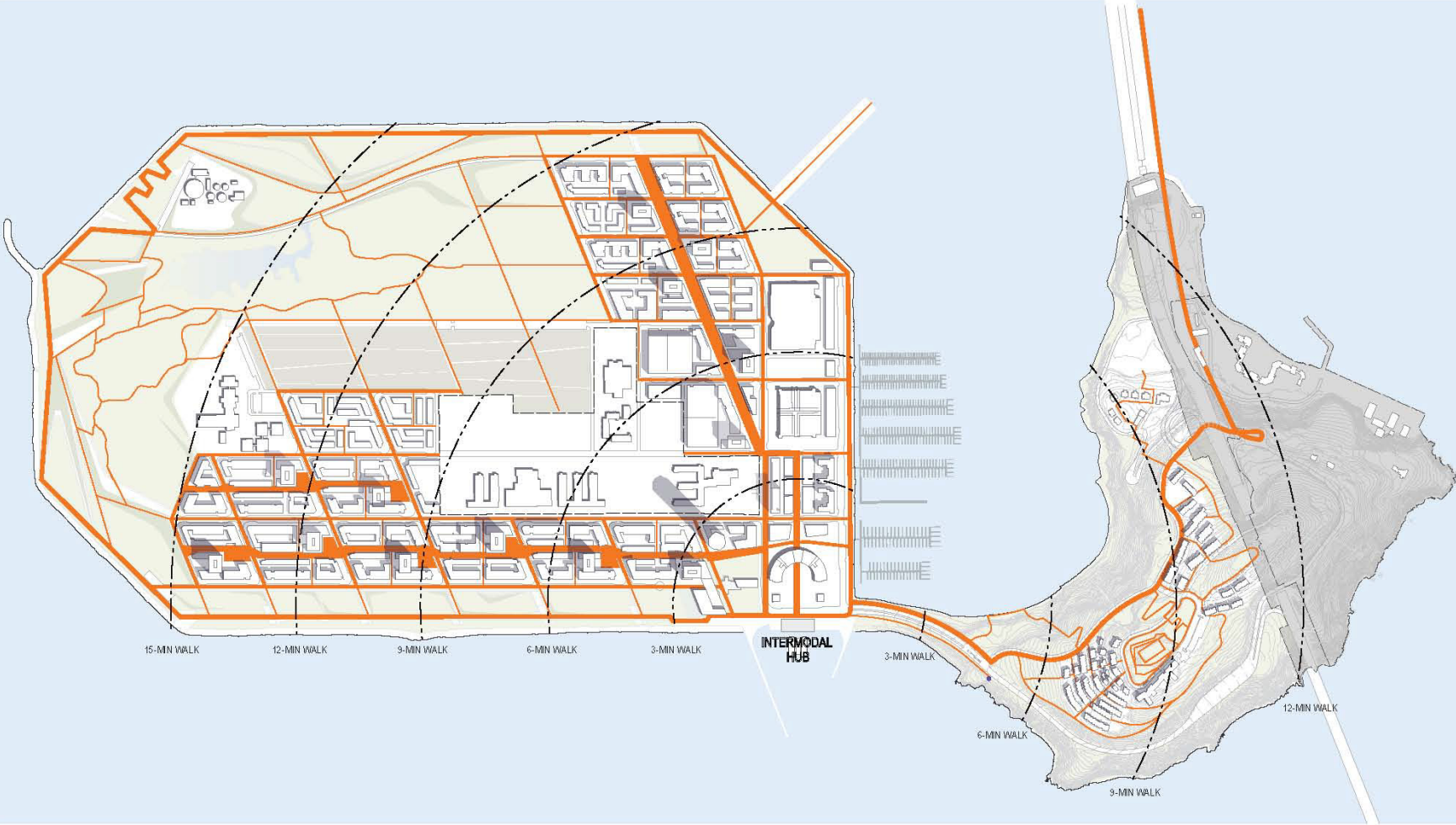


FERRY SERVICE

- Focus Ferries to City and West Side of Island
- Make ferry convenient and visible



WALKABILITY



PEDESTRIAN NETWORK AND WALKING TIMES

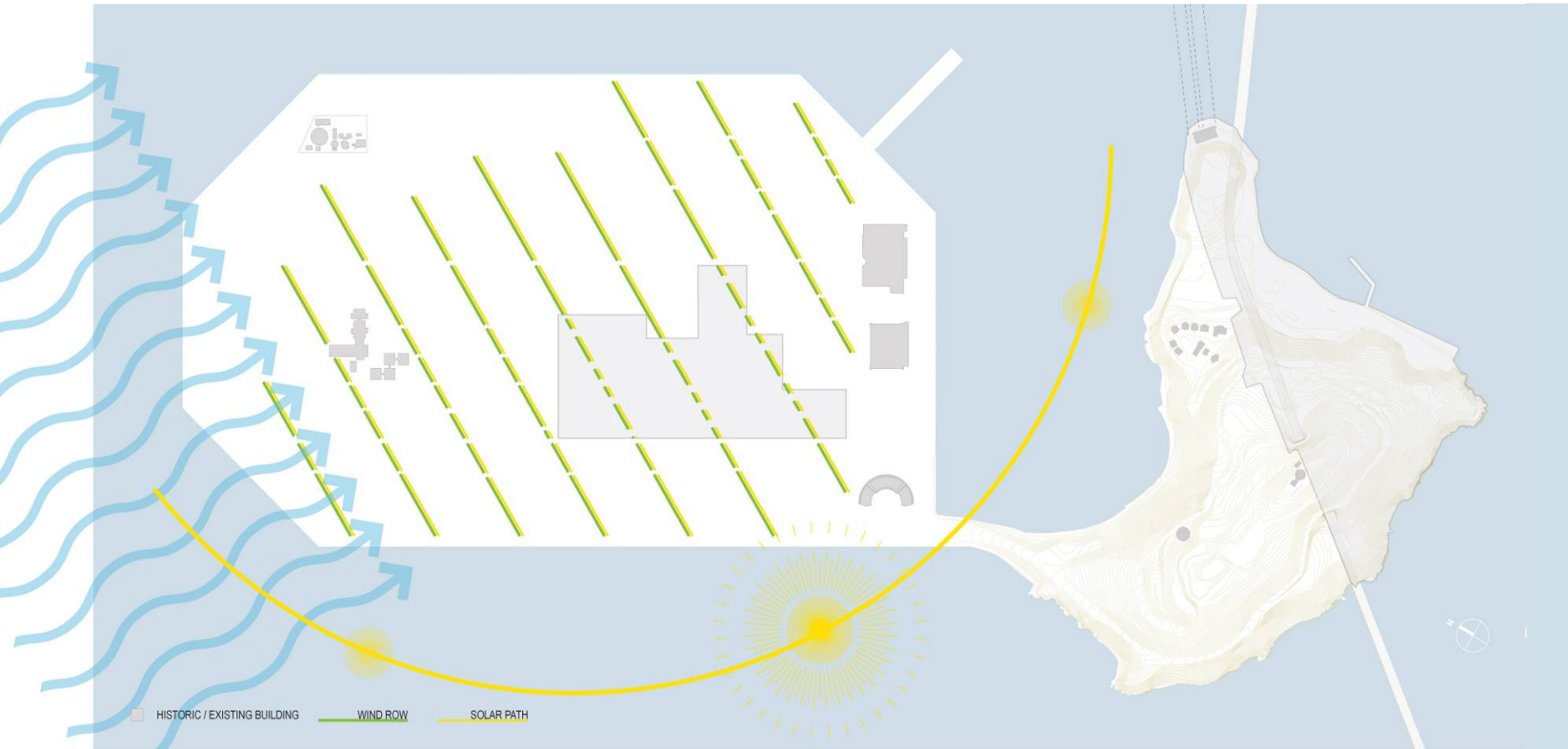
RESPOND TO MICRO CLIMATE

Wind | Fog | Sun

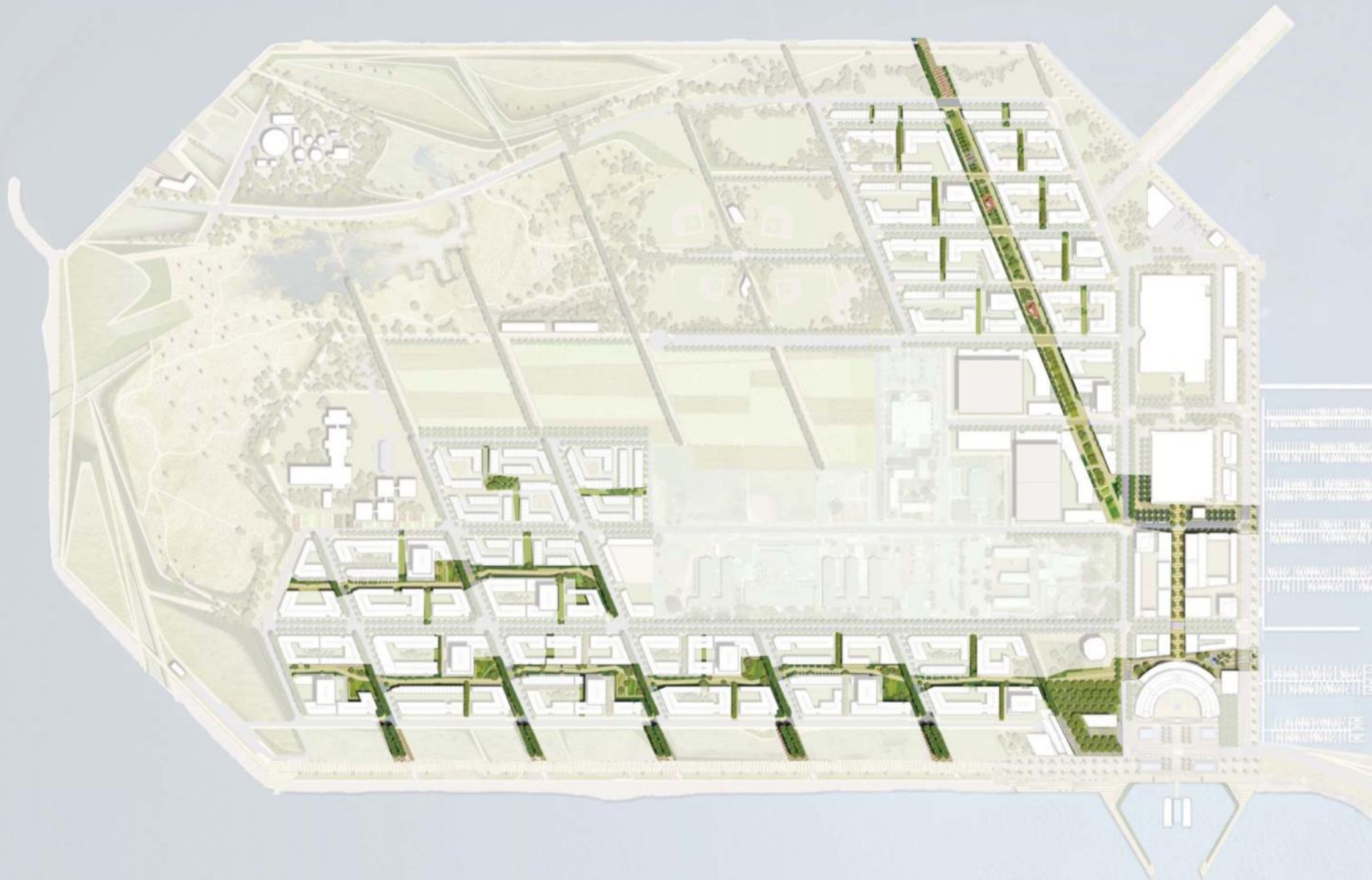


RESPOND TO MICRO CLIMATE

Wind | Fog | Sun



A NETWORK OF DYNAMIC STREETS





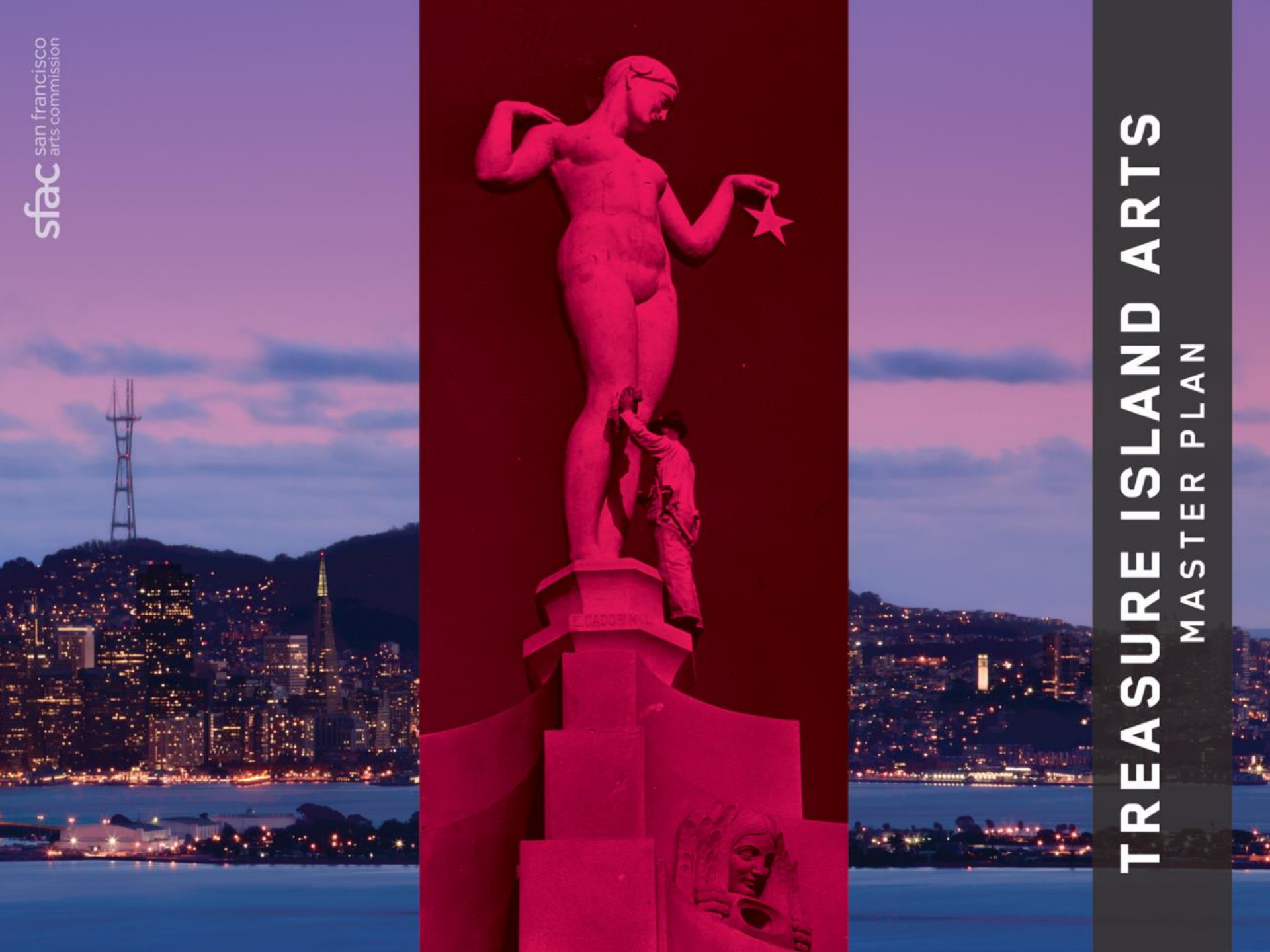


OPEN SPACE



MAJOR PHASES ONE – PARKS AND OPEN SPACES





TREASURE ISLAND ARTS MASTER PLAN

BUILDING ONE PLAZA



02 BUILDING 1 INTERIOR AND PLAZA

The Building 1 interior is an expansive light-filled space. Visitors to Treasure Island will pass through the building lobby en route to Marina Plaza and Clipper Cove. The interior may be an appropriate site for temporary installations using light and digital media.

The plaza in front of Building 1 acts as the civic focal point of Treasure Island with a large flexible space for gatherings and spectacular views. Its broad central walkway, flanked by a grid of date palms, is a primary axial pathway from Ferry Plaza to the Island Center and is a gateway to the retail district beyond. The new Visitor's Center will be located within Building 1.



Figure 5.08



Figure 5.09

SITE STATS:

SIZE: 2.5 acres

PROGRAM: Public Plaza/Historic Building

PROJECT PHASE: Phase 1

BUILDING ONE PLAZA



Figure 5.10



Figure 5.11



Figure 5.12

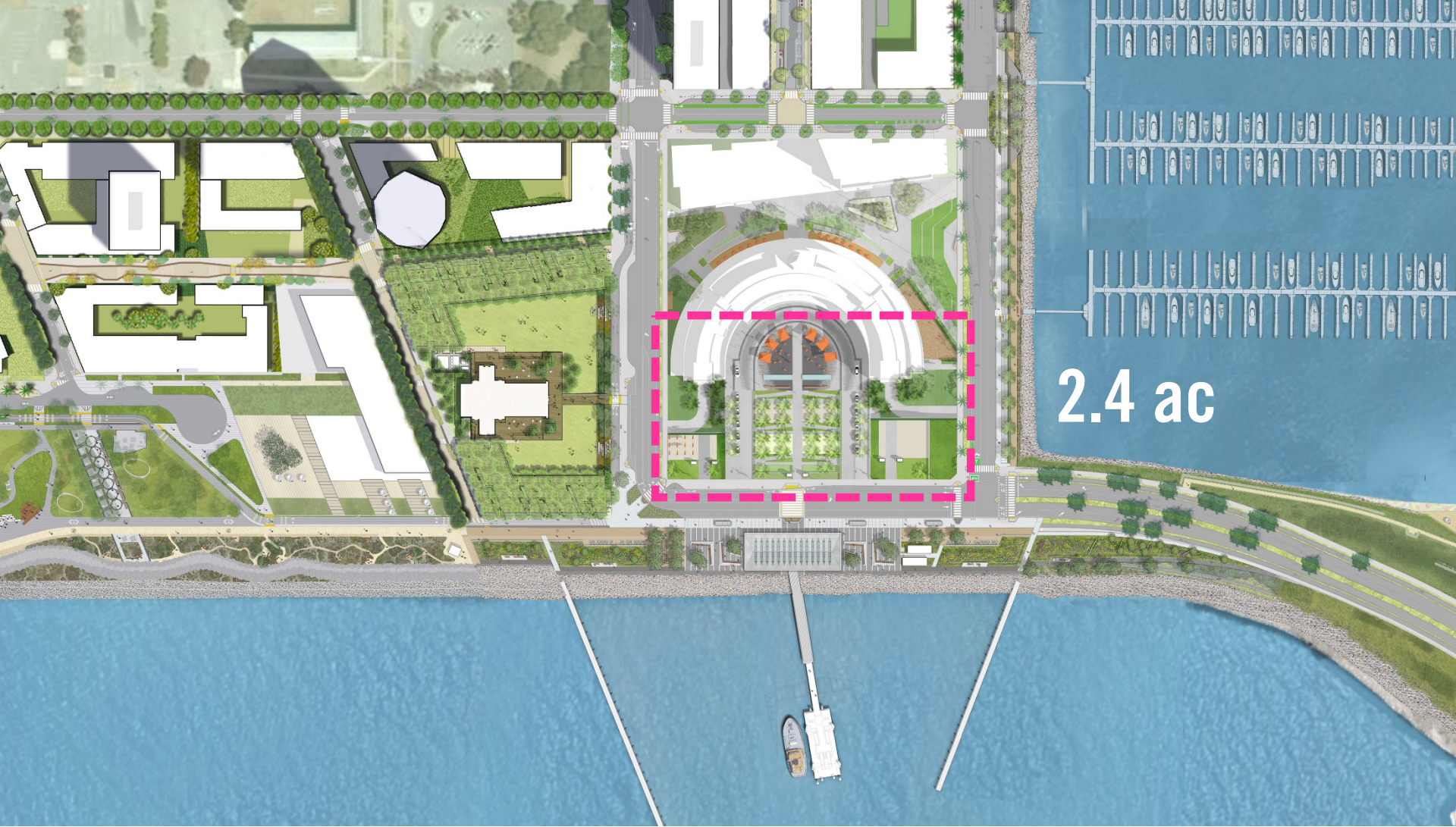
ART OPPORTUNITIES:

- **Priority: A contemporary landmark sculpture or a series of sculptures which may include wind-activated artworks in the northern and southern lower plazas.**
- Both the ground floor lobby and the mezzanine are appropriate sites for temporary installations or displays of two-dimensional artwork, temporary murals, light and digital media projections and sculptural and interactive installations

CONSIDERATIONS:

- The scale of the artwork should correspond to the scale of the building. These artworks can mark the transitional nature of the site through the use of contemporary materials and styles.

BUILDING ONE PLAZA



2.4 ac

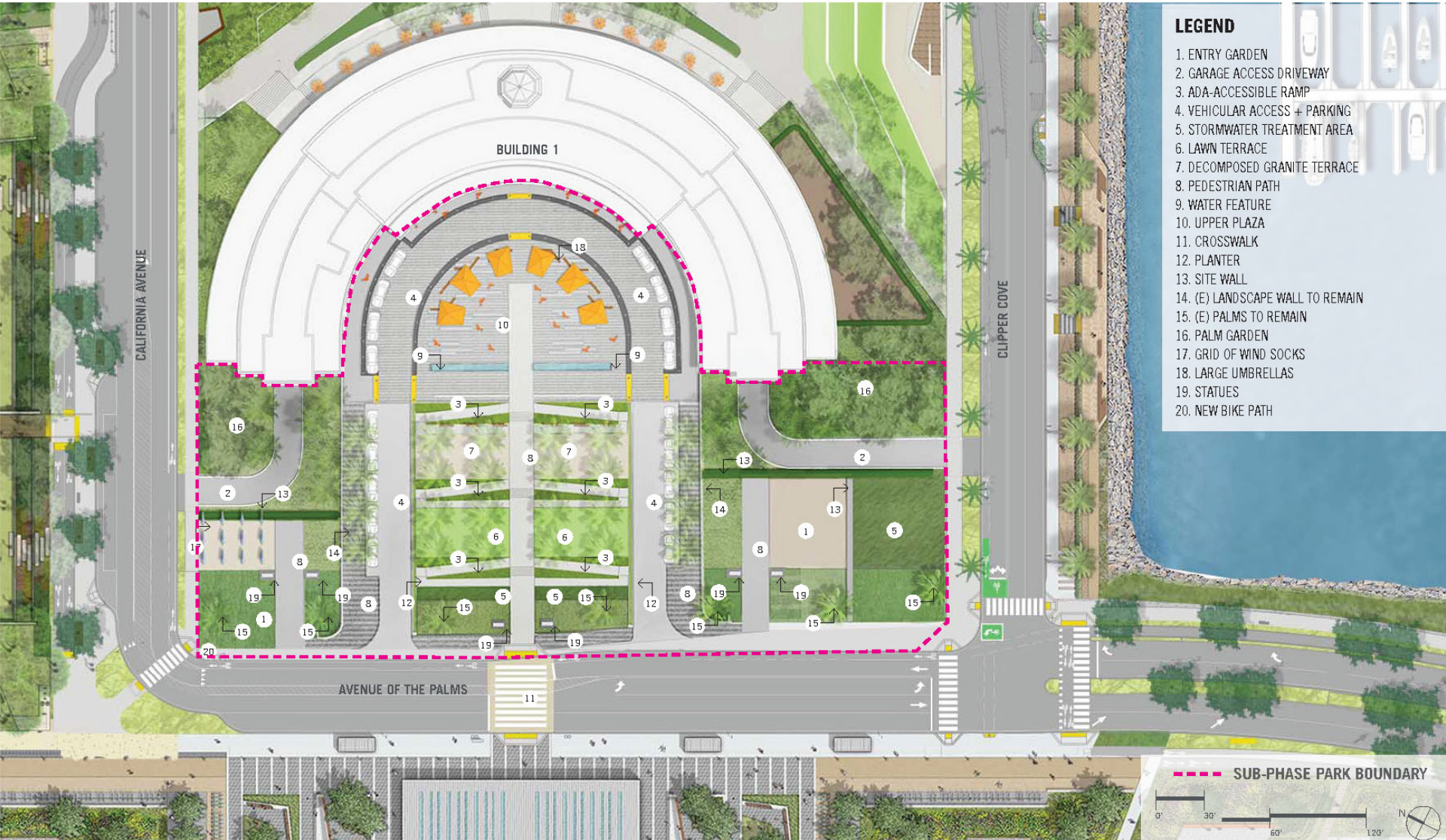
BUILDING ONE PLAZA



BUILDING ONE PLAZA ENTRANCE VIEW



BUILDING ONE PLAZA - CONCEPT



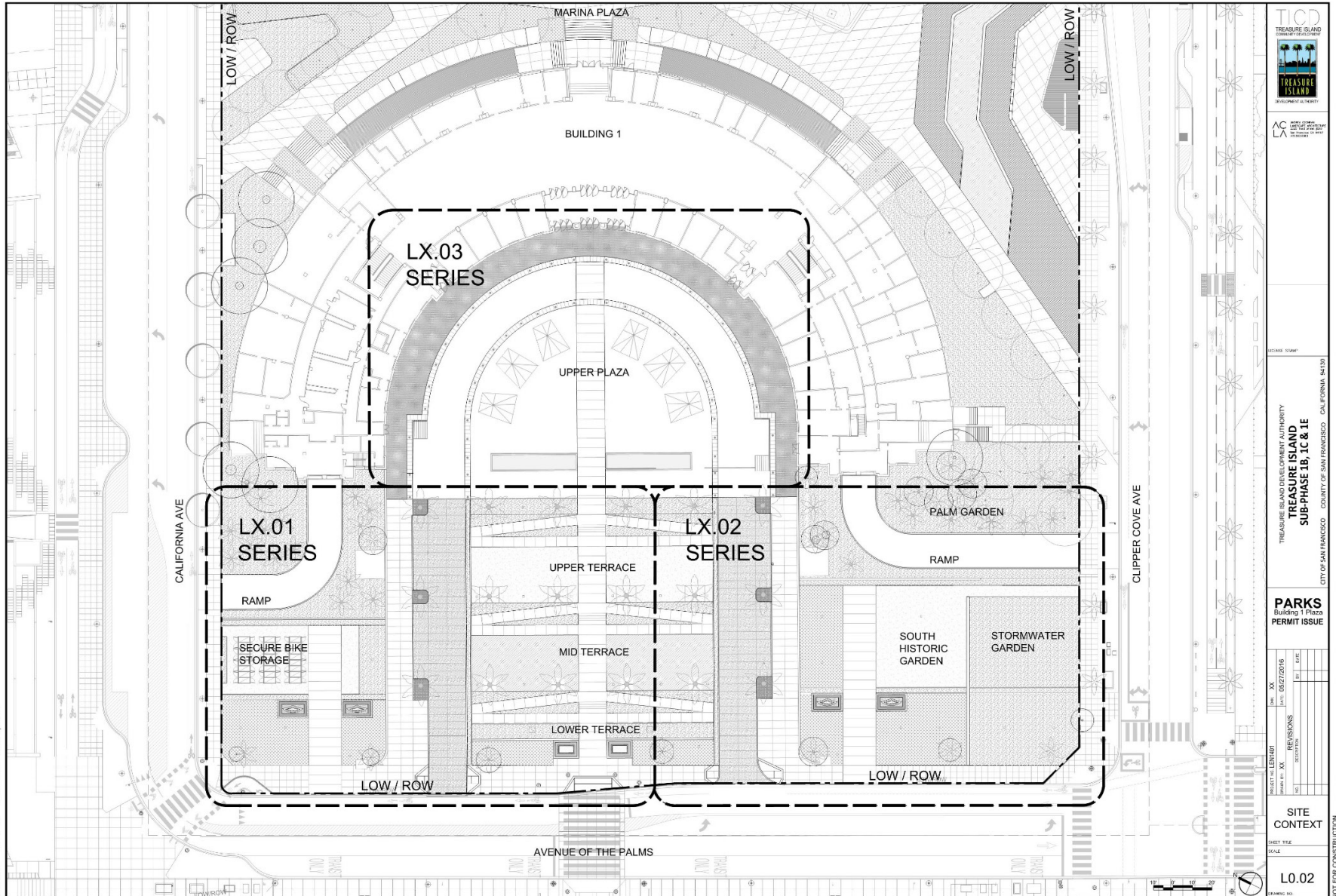
LEGEND

1. ENTRY GARDEN
2. GARAGE ACCESS DRIVEWAY
3. ADA-ACCESSIBLE RAMP
4. VEHICULAR ACCESS + PARKING
5. STORMWATER TREATMENT AREA
6. LAWN TERRACE
7. DECOMPOSED GRANITE TERRACE
8. PEDESTRIAN PATH
9. WATER FEATURE
10. UPPER PLAZA
11. CROSSWALK
12. PLANTER
13. SITE WALL
14. (E) LANDSCAPE WALL TO REMAIN
15. (E) PALMS TO REMAIN
16. PALM GARDEN
17. GRID OF WIND SOCKS
18. LARGE UMBRELLAS
19. STATUES
20. NEW BIKE PATH

--- SUB-PHASE PARK BOUNDARY



BUILDING ONE PLAZA – FINAL PLANS



DRAWING NAME: C:\projects\island\building_1\cor_morino\plans\1410\main\1410.dwg current: 05/27/2016 11:00:00 AM User: ccor_morino



10-858 SMP

TREASURE ISLAND DEVELOPMENT AUTHORITY
TREASURE ISLAND
SUB-PHASE 1B, 1C & 1E
 COUNTY OF SAN FRANCISCO CALIFORNIA 94130

PARKS
 Building 1 Plaza
PERMIT ISSUE

PROJECT NO. LEN407	DATE	BY	CHK
DRAWN BY: XX	05/27/2016		
DESIGNED BY: XX			
CHECKED BY: XX			

SITE CONTEXT

SHEET TITLE
 SCALE

L0.02

NOT FOR CONSTRUCTION

WATERFRONT PLAZA



01 WATERFRONT PLAZA

The public plaza, ferry shelter, and associated coastal landscape serve as an intermodal hub connecting multiple modes of transit including cyclists, pedestrians, ferries, shuttles and buses. Numerous seating nodes and terraces radiate from the central ferry shelter to take full advantage of the views to the bay and the San Francisco skyline.



Figure 5.03



Figure 5.04

SITE STATS:

SIZE: 2.4 acres

PROGRAM: Transit Hub/Gateway Entry to Treasure Island/Waterfront Plaza

PROJECT PHASE: Phase 1

WATERFRONT PLAZA



Figure 5.05



Figure 5.06



Figure 5.07

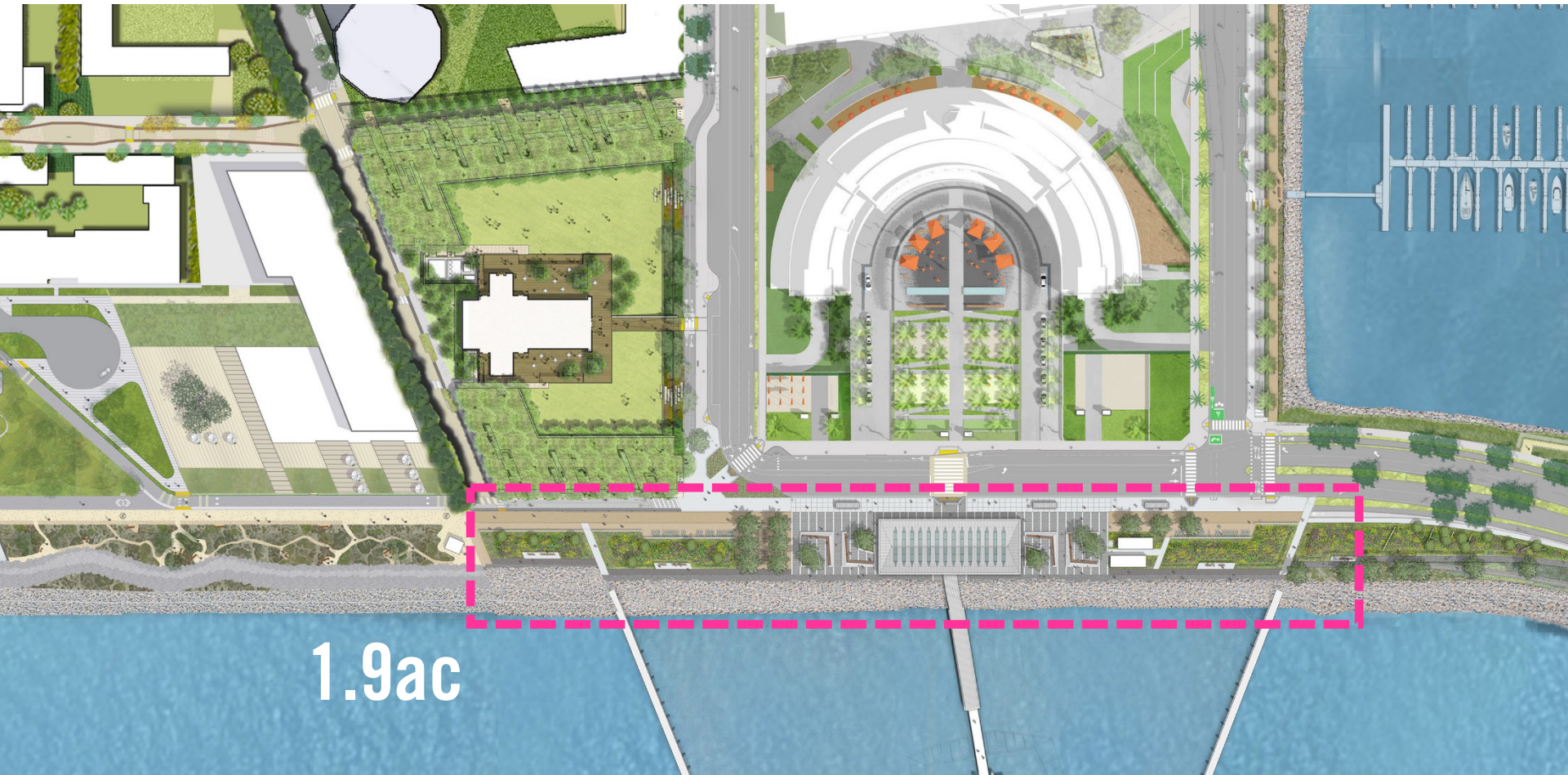
ART OPPORTUNITIES:

- **Priority:** Large-scale iconic gateway sculpture that will serve as a beacon for the island, greeting visitors and residents upon their arrival.
- Smaller-scaled works that address the water's edge and that interact with the movement of the bay and the wind with the use of reflective and kinetic materials.

CONSIDERATIONS:

- The artworks should be of significant scale to command the bayfront location and should respond to the unique vantage points from which they will be viewed.

WATERFRONT PLAZA



1.9ac

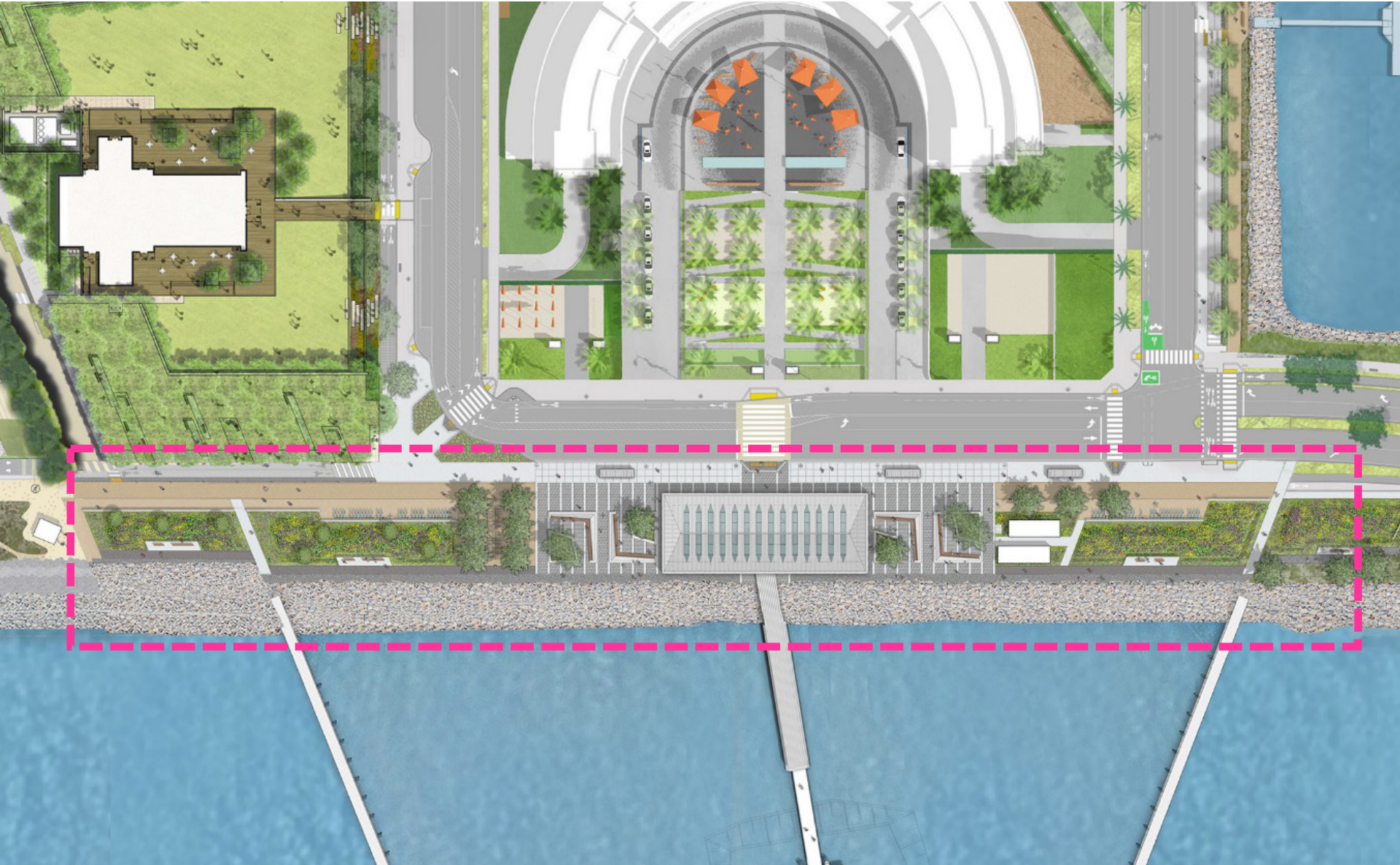
WATERFRONT PLAZA



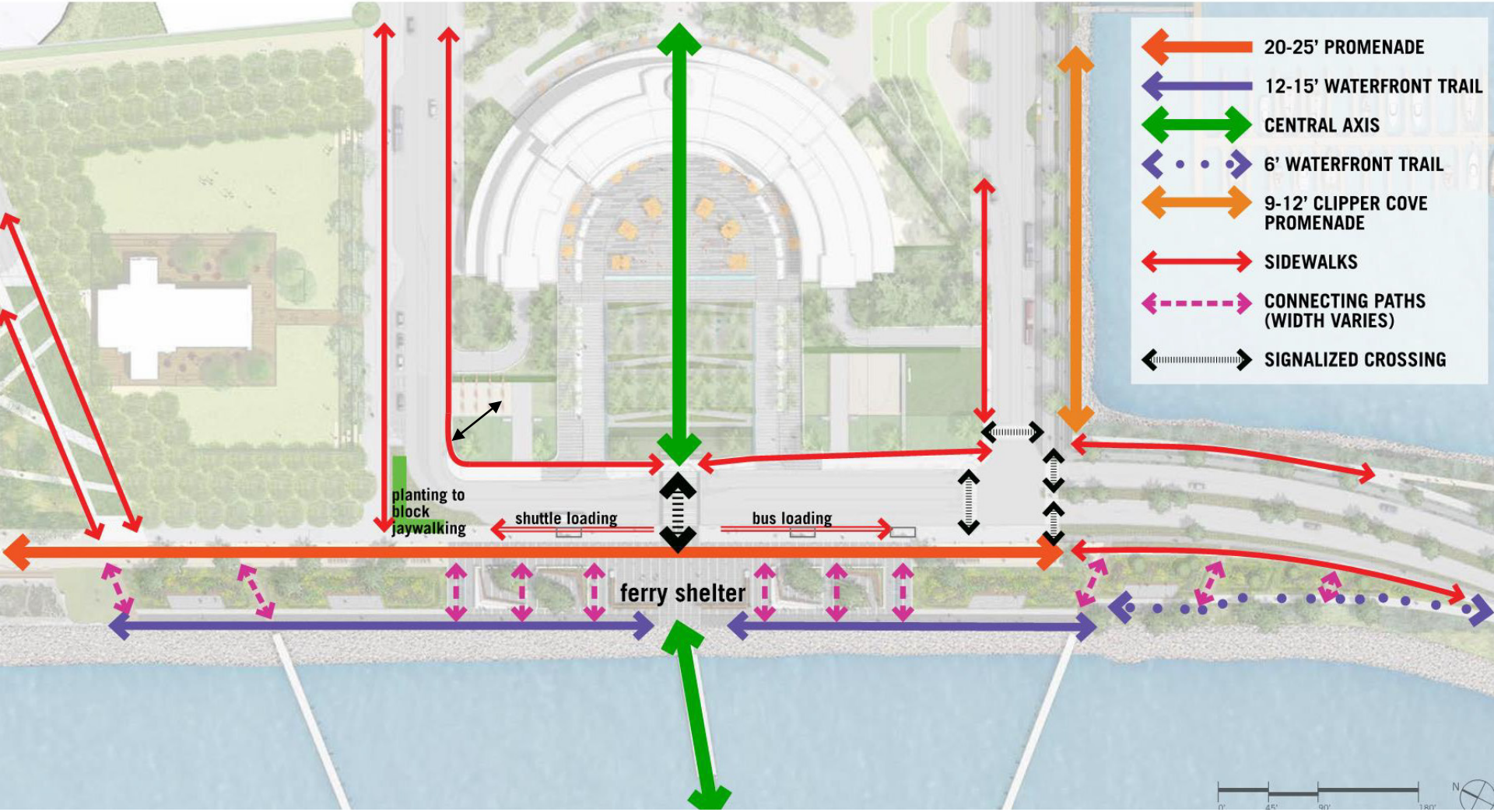
WATERFRONT PLAZA



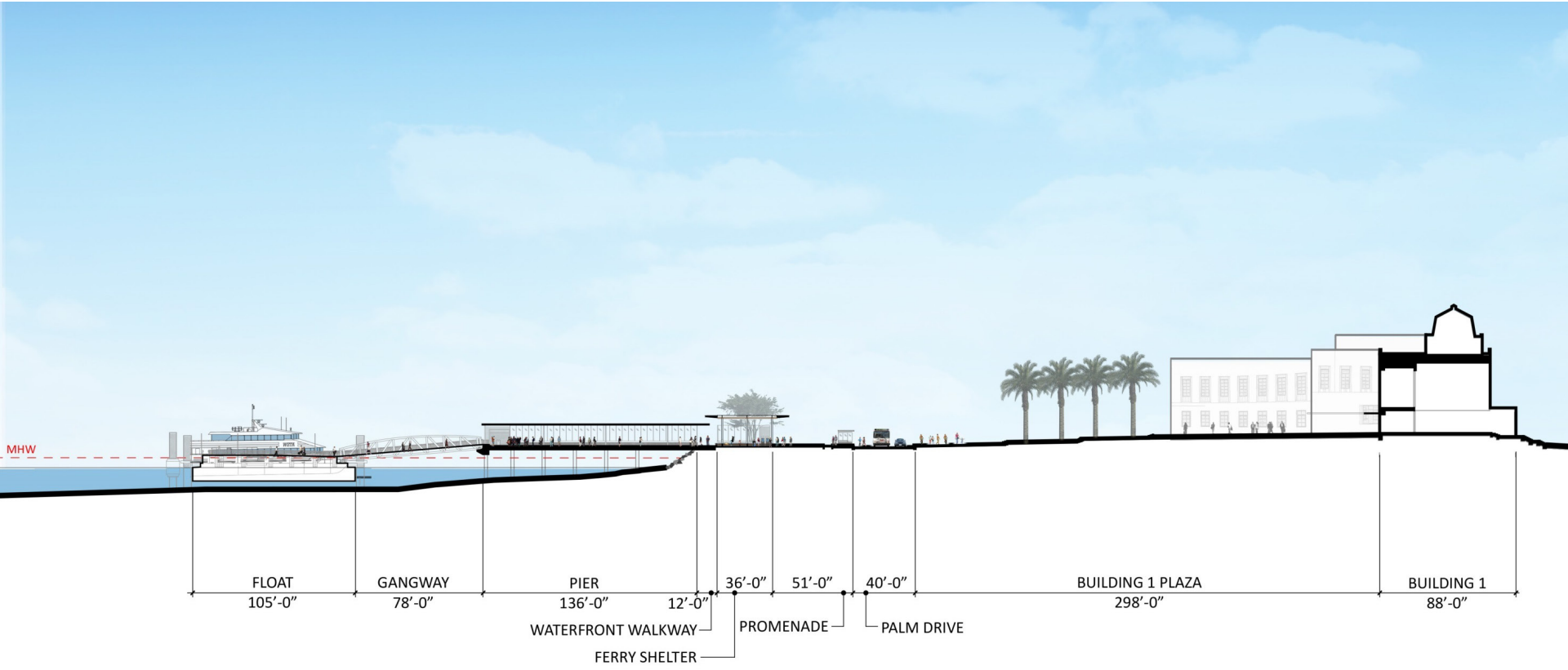
WATERFRONT PLAZA



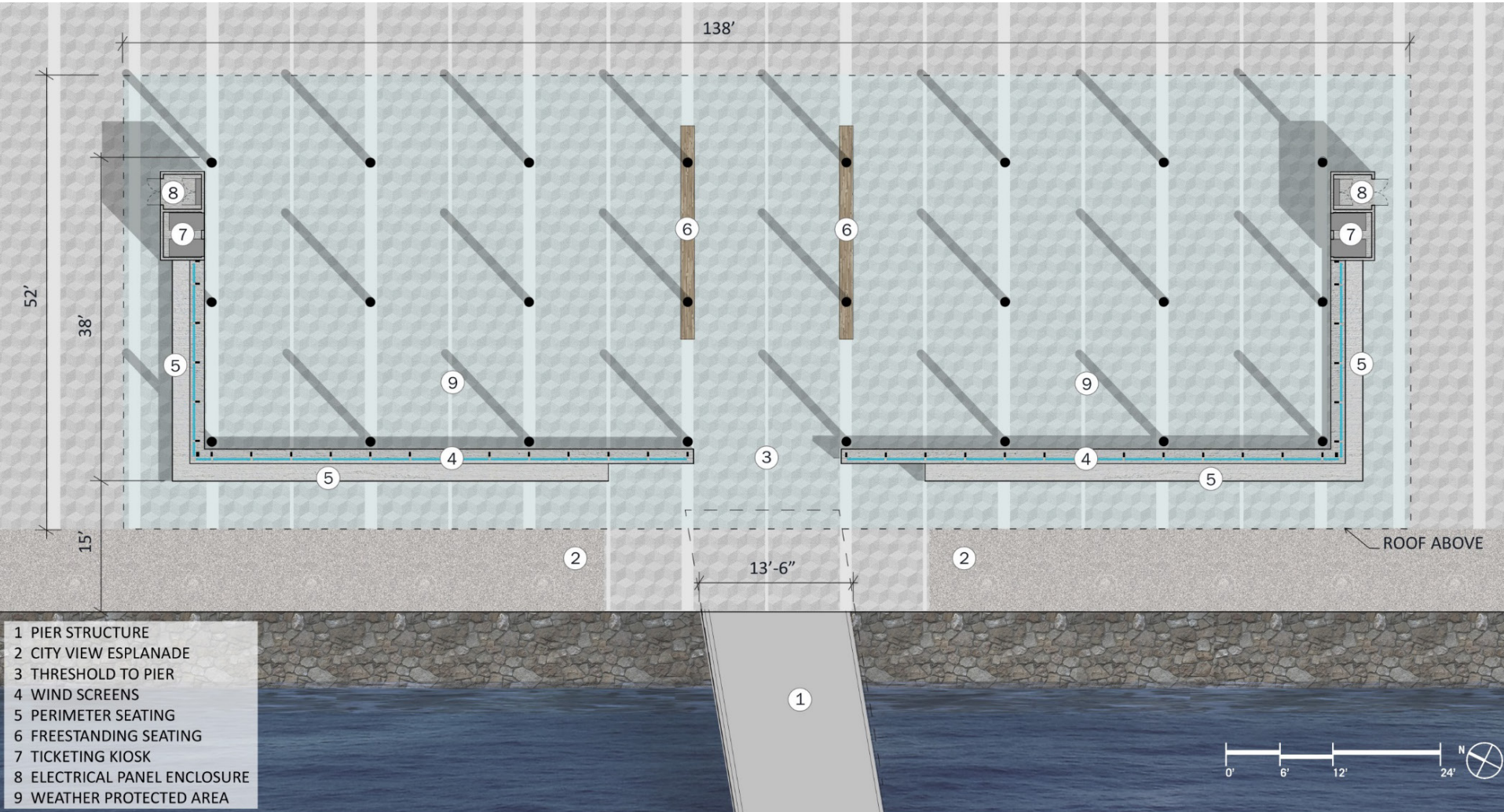
WATERFRONT PLAZA



WATERFRONT PLAZA TO BUILDING ONE PLAZA



FERRY SHELTER



WATERFRONT PLAZA AND FERRY SHELTER



WATERFRONT PLAZA AND FERRY SHELTER



YERBA BUENA ISLAND – HILLTOP PARK



YERBA BUENA ISLAND – HILLTOP PARK



04 YERBA BUENA ISLAND HILLTOP PARK

This site is a cultural and ecological arboretum. It tells an evolutionary story with layers of time embedded (stairs, foundation, ruins) as the site flora transitions from a historic ecology to a more cultural landscape. The northern and southern hilltops act as foci of two distinct experiences within the arboretum. The southern hilltop retains and reveals the site's ecological history, while the northern hilltop cultivates an attention to the island's cultural history through remnants and a focus on the built landscape.



Figure 5.19



Figure 5.20

SITE STATS:

- SIZE:** 4.3 acres
- PROGRAM:** Public Park
- PROJECT PHASE:** Phase 1

YERBA BUENA ISLAND – HILLTOP PARK



Figure 5.21



Figure 5.22



Figure 5.23

ART OPPORTUNITIES:

- **Priority:** A large-scale sculpture as a focal point for the Hilltop Park.
- **Priority:** Sculptural artworks created from eucalyptus wood salvaged from Yerba Buena Island.

CONSIDERATIONS:

- Artwork created for Hilltop Park should enhance and integrate into the natural setting.

YERBA BUENA ISLAND – HILLTOP PARK



SADDLE

- 1. BOSQUE OF PINES
- 2. ARRIVAL
- 3. SPINE
- 4. HILLOCK

NORTH HILLTOP

- 5. OVERLOOK
- 6. MONTEREY PINE GROVE
- 7. OVERLOOK / TERRACE SEATING
- 8. PATHWAYS

SOUTH HILLTOP

- 9. DOG PARK
- 10. TRAILS / GOAT PATHS
- 11. OVERLOOK
- 12. PICNIC / GATHERING

**PRESERVED
EXISTING SITE ELEMENTS**

- 13. CONCRETE STAIRS
- 14. PRESERVED AREA
- 15. RETAINING WALL



WEST HILLTOP

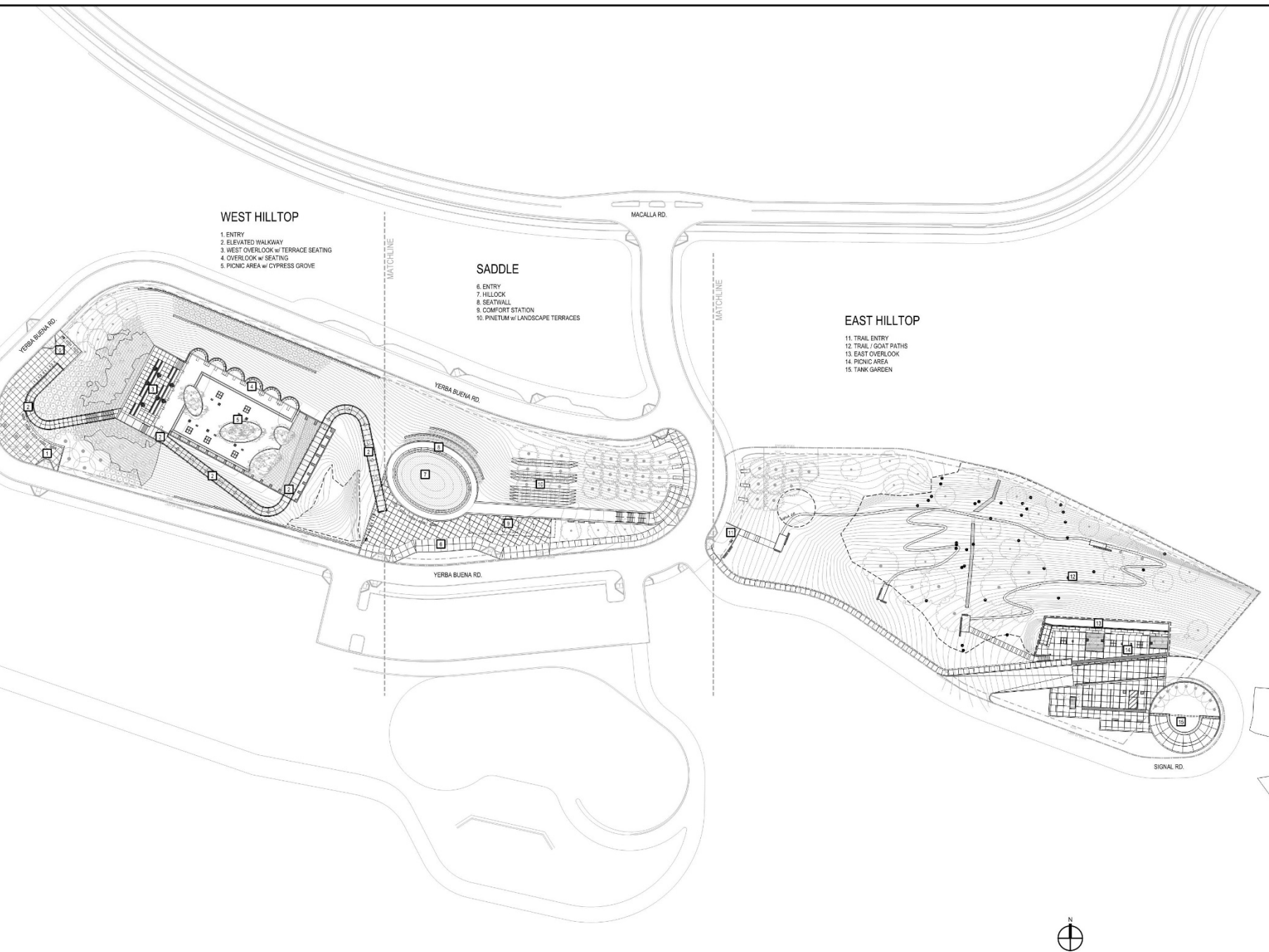
1. ENTRY
2. ELEVATED WALKWAY
3. WEST OVERLOOK w/ TERRACE SEATING
4. OVERLOOK w/ SEATING
5. PICNIC AREA w/ CYPRESS GROVE

SADDLE

6. ENTRY
7. HILLOCK
8. SEATWALL
9. COMFORT STATION
10. PINETUM w/ LANDSCAPE TERRACES

EAST HILLTOP

11. TRAIL ENTRY
12. TRAIL / GOAT PATHS
13. EAST OVERLOOK
14. PICNIC AREA
15. TANK GARDEN



NOT FOR CONSTRUCTION

HILLTOP PARK – RIDGELINE PATH



HILLTOP PARK



THANK YOU. ANY QUESTIONS?

